

SALI Crossbody Bag Project - Design A

by Yoan Zivkovic - yoansewingstudio
www.yoansewingstudio.com
www.youtube.com/yoansewingstudio
©Copyright 2022 yoansewingstudio



Supplies

Fabric 1: 1/4 yard or 1 fat quarter cotton quilting fabric
Fabric 2: 1/4 yard of canvas fabric
Fabric 3: 1/2 yard cotton quilting fabric
**yardage requirements are an estimate, based on 44" wide cotton quilting fabric.*

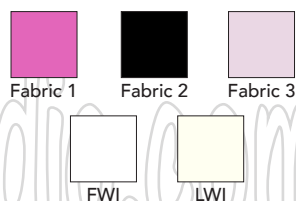
1/8 yard fusible woven interfacing - Pellon SF 101 (20" wide) <https://amzn.to/3bvgtLu>
1/8 yard ultra light weight interfacing: I use Pellon PLF 36 (15" wide) <https://tidd.ly/3BPWzDF>
7" x 8 1/2" (18 x 21.5 cm) RFID blocking fabric (optional) <https://tidd.ly/3ka0GC2>
5" (13 cm) teeth length - metal zipper 2x <https://tidd.ly/3BEweu9>
8" (20 cm) teeth length - metal zipper <https://tidd.ly/3BEweu9>
1/8" or 1/4" basting tape <https://amzn.to/3BPXtjx>

1/2" (12mm) inner measurement d-ring 2x <https://amzn.to/3OW9bha>
1/2" (12mm) inner measurement swivel hook (2) <https://amzn.to/3OW9bha>
5/8" (16mm) adjustable strap slider <https://amzn.to/3bwAYr9>
Polyester thread

Tools

Basic sewing notions
Zipper foot
Walking foot

Finished bag measurements :
approx. 6" x 9" (15 x 23 cm)



Abbreviation

FWI : Fusible Woven interfacing
LWI : Light Weight Interfacing

watch the video tutorial
<https://youtu.be/vnynXVX7gd0>

Cutting

Panel 1,2,3

Cut 1x each from Fabric 1 : 7" x 2" (18 x 5 cm)
Cut 1x each from FWI : 6" x 2" (15 x 5 cm)

Panel 4

Cut 1x from Fabric 2 : 7" x 5 1/2 (18 x 14 cm)

Panel 5 (lower inner pocket)

Cut 2x from fabric 3 : 7" x 12" (18 x 30.5 cm)

Panel 6 (upper pocket lining)

Cut 1x from RFID fabric or fabric 3 : 7" x 8 1/2" (18 x 21.5 cm)

Panel 7 (card pocket)

Cut 1x from Fabric 3 : 33" x 3 1/2" (84 x 9 cm)

Cut 1x from LWI : 32" x 2 1/2" (81 x 6.5 cm)

Note : cut the LWI in mutple shorter strips, then fuse them next to each other.

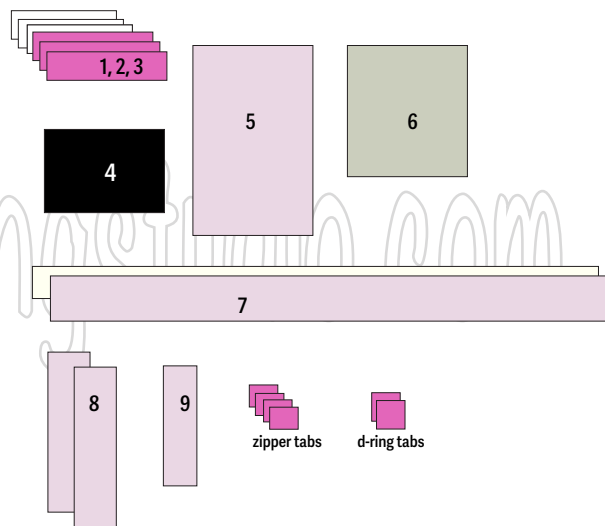
Panel 8

Cut 2x from Fabric 3 : 2 3/4" x 8 1/2" (7 x 21.5 cm)

Panel 9

Cut 1x from Fabric 3 : 2 1/2" x 7" (6.5 x 18 cm)

Note : No panel 4 for design B



Zipper Tabs

Cut 4x from Fabric 1 : 2" x 1 1/2" (5 x 4 cm)

d-ring tabs

Cut 2x from Fabric 1 : 2" x 2" (5 x 5 cm)

Panel 10 (upper back)

Cut 1x from Fabric 1: 7" x 1 1/2" (18 x 4 cm)

Cut 1x from FWI: 6" x 1 1/2" (15 x 4 cm)

Panel 11 (lower back)

Cut 1x from Fabric 1: 7" x 9 1/2" (18 x 24 cm)

Cut 1x from FWI: 6" x 9 1/2" (15 x 24 cm)

Panel 12 (interior)

Cut 2 from Fabric 2: 7" x 10" (18 x 25.5 cm)

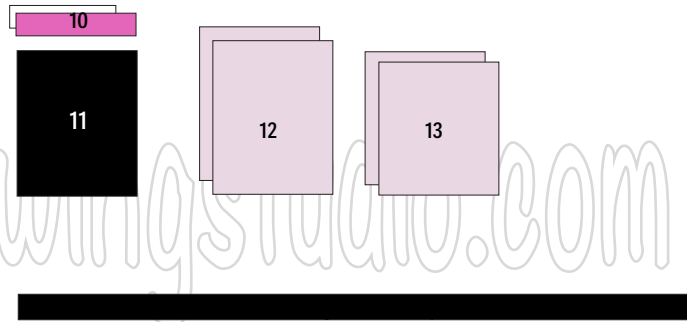
Panel 13 (Slip pocket)

Cut 2x from Fabric 2: 7" x 8" (18 x 20.5 cm)

Adjustable strap

Fabric 1: 55" x 2" (140 x 5 cm)

LWI: 54" x 1" (137 x 2.5 cm)



Directions

Seam allowances are 1/2" (1.2cm) unless otherwise stated.

Please watch the Full Video Tutorial for thorough demonstration.

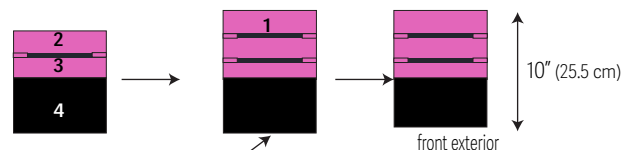
Preparation

1. Fuse the FWI to the wrong side of panel 1, 2, 3, 10, 11 (center the position).
2. Fuse the LWI to the wrong side of panel 7 (center the position).

Front Exterior

3. Sew panel 3 & p right sides together, press, then topstitch.
4. Install the zipper tabs on both 5" zippers.
5. Sew and install the lower zipper pocket.
6. Install the upper zipper.
7. Trim off the bottom panel so that the front exterior will measure 10" tall, set aside.

watch the video tutorial
<https://youtu.be/vnynXVX7gd0>

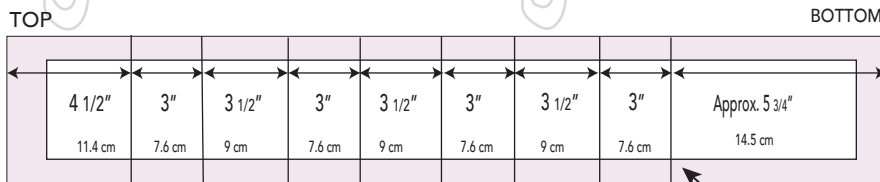


trim the bottom (if necessary)
to measure 10" (25.5 cm) tall

making the card pocket

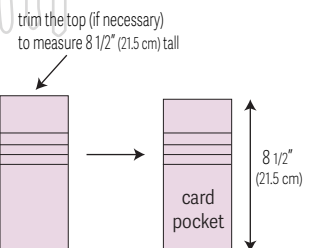
8. Following the below diagram, draw the folding lines on the wrong side of panel 7.
(start drawing from the top to the bottom).
9. Fold and press panel 7 to make 4x card slots (start folding from the bottom to top).

use 1/4" (6mm) seam allowance when sewing the zipper



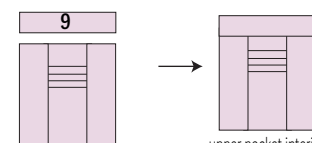
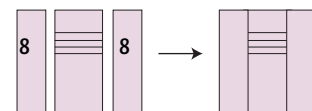
start drawing from the top

start folding and pressing from the bottom



trim the top (if necessary)
to measure 8 1/2" (21.5 cm) tall

8 1/2"
(21.5 cm)
card pocket

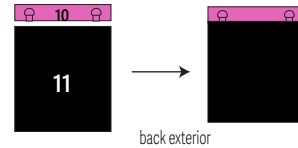


10. Trim the top edges of the card pocket panel so that it will measure 8 1/2" (21.5cm) tall.
11. Sew panel 8 to the long sides of the card slots, press, then topstitch.
12. Sew panel 9 to the top edges of the card pocket panel, press, then topstitch.
13. With the card pocket panel right side up, and the front exterior panel right side up, sew all round with 1/8" (3mm) seam allowance.

Back Exterior, strap

14. Sew the d-ring tabs, then install them on the right side of panel 10.
15. With the right sides facing, sew panel 10 and 11 together, press, then topstitch.
16. Sew the strap, then install the hardware, set aside.

Note : feel free to make your strap from fabric 1 instead (you will need a little extra fabric); apply some FWI : 54" x 1" (137 x 2.5 cm) and you may use 1/2" adjustable strap slider instead.



Link to the adjustable strap installation :

<https://youtu.be/KnoxsjU3III?t=1131>

Interior

17. With the right sides facing, sew panel 13, press, then topstitch.
18. Sew the slip pocket panel on the right side of the back interior panel.

Assembling the bag, finishing

19. Install the zipper closure (please pay a close attention to the demonstration given in the video tutorial).
20. Assemble the bag, leave about 4" (10cm) of opening at the bottom.
21. Turn the bag inside out through the opening hole.
22. Sew the opening hole, then place the bag interior back inside.
23. Attach the strap, and your bag is done.

watch the video tutorial
<https://youtu.be/vmynXVX7gd0>

You may sell the bag that you make from this pattern given that it's a home based business.

©Copyright 2022 yoansewingstudio. All Rights Reserved. Duplication of any kind is prohibited.