

The Naomi Tote Bag

Patchwork layout and cutting direction
by Yoan Zivkovic

www.yoanstudio.com | Full tutorial <https://youtu.be/3p6Ms2yEcl>



Supplies

- 4 Jelly Roll (2 1/2") Strips
- 1 Yard accent fabric
- 1/2 yard interior lining fabric
- Fusible woven interfacing
- Fusible Fleece
- 12" metal zipper
- 1 set of magnetic snap
- Basic sewing notions

Seam Allowance

- 1/4" seam allowance throughout the piecing of the patchwork (unless otherwise stated)
- 1/2" seam allowance throughout the bag construction (unless otherwise stated)

watch the full tutorial :

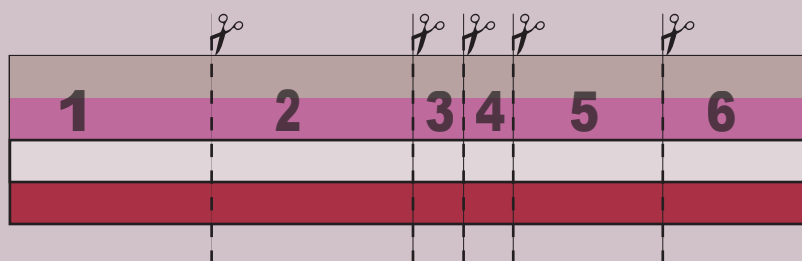
<https://youtu.be/3p6Ms2yEcl>

From the Jelly Roll Strips

sew all four jelly roll strips together (1/4" seam allowance)



Measure and cut as instructed below :



1. 10" x 8 1/2"
2. 10" x 8 1/2"
3. 2 1/2" x 8 1/2"
4. 2 1/2" x 8 1/2"
5. 7 1/2" x 8 1/2"
6. 7 1/2" x 8 1/2"

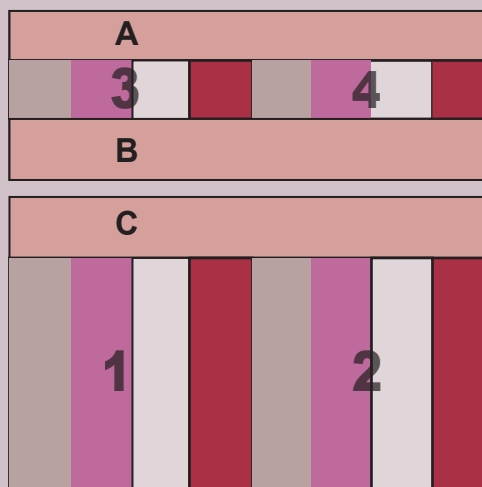
From the Accent Fabric

Front exterior

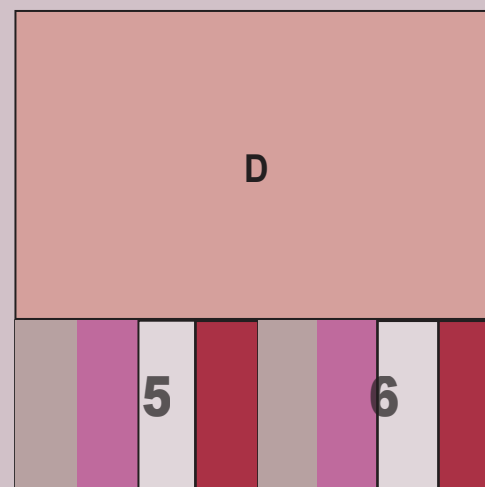
- A : 16 1/2" x 2"**
- B : 16 1/2" x 2 1/2"**
- C : 16 1/2" x 2 1/2"**

Back Exterior :

- D : Cut one 16 1/2" x 11"**



front exterior layout



back exterior layout

The Naomi Tote Bag

Patchwork layout and cutting direction
by Yoan Zivkovic

www.yoanstudio.com



~Interfacing~

Upper front exterior

Cut one 16 1/2" x 6" from the fusible woven interfacing
Cut one 16 1/2" x 5" from the fusible fleece

Lower front exterior

Cut one 16 1/2" x 12" from the fusible woven interfacing
Cut one 16 1/2" x 11 1/2" from the fusible fleece

Back exterior

Cut one 16 1/2" x 18" from the fusible woven interfacing
Cut one 16 1/2" x 17 1/2" from the fusible fleece

~Bag Interior~

Facing

Cut two 16 1/2" x 3" from the accent fabric

Lining

Cut two 16 1/2" x 15 1/2"

Slip Pockets

Cut two 16 1/2" x 7" from the accent fabric

~Flap~

Flap exterior and lining

Cut two 23" x 6" from the accent fabric

Flap lining interfacing

Cut one 22" x 5" from the fusible woven interfacing

~Straps~

Cut two 23" x 4" from the accent fabric
Strap interfacing : Cut two 23" x 2" from the fusible woven interfacing

~Zipper Lining~

Upper zipper lining

Cut one 16 1/2" x 6"

Lower zipper lining

Cut one 16 1/2" x 12"

Front lining piece (to be placed after the zipper installment) on the front exterior

Cut one 16 1/2" x 18" from the accent fabric