

Two-Tone Foldover Backpack Project

by Yoan Zivkovic - Yoan Sewing Studio

www.yoansewingstudio.com

www.youtube.com/yoansewingstudio

©Copyright 2022 Yoan Sewing Studio



Supplies

Fabric 1 (exterior) : 16 1/2" x 21 1/2" (42 x 54.5 cm) - cotton quilting fabric <https://tidd.ly/3lqhm36>

Fabric 2 (exterior) : 1/2 yard of cotton quilting fabric

Fabric 3 (interior) : 3/4 yard of cotton quilting fabric

**yardage requirements are an estimate, based on 44" wide cotton quilting fabric.*

**alternative fabric choice : canvas, linen, light denim*

14" x 38" (35.5 x 96.5 cm) fusible fleece - Pellon TP971F <https://amzn.to/3lHa0ro>

2/3 yard fusible woven interfacing - Pellon SF101 (20" wide) <https://tidd.ly/3BPWzDF>

8" x 20" (20.5 x 51 cm) Light weight interfacing - Pellon PLF36

**if you opt for heavier fabric than cotton quilting, depending on the thickness of your fabric you may need to adjust the interfacing accordingly.*

1x 14" (35.5 cm) - teeth length; purse size zipper (#4.5) - for the closure <https://amzn.to/3uaRjs1>

1x at least 8" long (20 cm) long; purse size zipper (#4.5) - for the exterior pocket <https://amzn.to/37nQin6>

1x at least 8" (20 cm) long; all purpose zipper (#3) - for the interior pocket <https://amzn.to/3j4UB9Z>

3 1/2 yard webbing strap 1" (25mm) wide <https://tidd.ly/3NOlpZ3>

1" (25mm) inner measurement d-rings or rectangular rings 2x

1" (25mm) inner measurement adjustable strap slider 2x <https://amzn.to/3BPQ0Rr>

Parachute buckle 1x set for 1" (25mm) strap <https://amzn.to/3j8JexK>

**make sure that the male buckle has the slider bar to make the strap adjustable*

1/8" or 1/4" basting tape <https://amzn.to/3BPxtjx>

Tools

Basic sewing notions

24" quilting ruler <https://amzn.to/3KfbqLb>

Walking foot

Polyester thread

Cutting

Front & Back exterior

Cut 1x each from Fabric 1 & 2 : 16 1/2" x 21 1/2" (42 x 54.5 cm)

Cut 1x each from FF & FWI : 14" x 19" (35.5 x 48.5 cm)

Exterior zipper pocket

Cut 1x from Fabric 3 : 9" x 21" (23 x 53 cm)

Cut 1x from LWI : 8" x 20" (20.5 x 51 cm)

Front & Back interior

Cut 2x from fabric 3 : 15" x 20" (38 x 51 cm)

Cut 1x from FF : 14" x 19" (35.5 x 48.5 cm)

Cut 1x from FWI : 14" x 9" (35.5 x 23 cm)

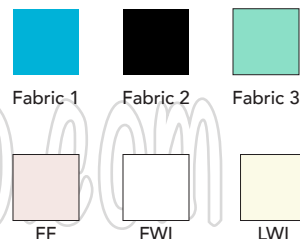
Interior zipper pocket

Cut 1x from Fabric 3 : 9" x 16" (23 x 40.5 cm)

Interior slip pocket

Cut 1x from Fabric 2 : 15" x 17" (38 x 43 cm)

Finished bag measurements :
Approx. 13" x 14" x 3" (33 x 35.5 x 7.5 cm)



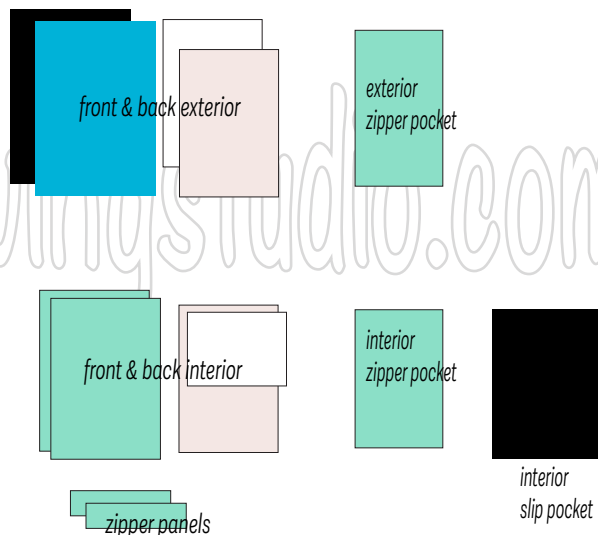
Abbreviation

FF : fusible fleece

FWI : fusible woven interfacing

LWI : light weight interfacing

watch the video tutorial
<https://youtu.be/xf6kuXcphnE>



©Copyright 2022 Yoan Sewing Studio

Page 1

Zipper Panels

Cut 2x from fabric 3 : 14" x 2 1/2" (35.5 x 6.5 cm)

Straps

Cut 2x webbing: 42" (107 cm)

Ring tabs

Cut 2x webbing : 4" (10cm)

watch the video tutorial
<https://youtu.be/xf6kuXcphnE>

Buckle straps

Female Buckle : Cut 1x webbing 7" (18cm)

Male Buckle : Cut 1x webbing 17" (43 cm)

Strap holder

Cut 1x webbing 15" (38 cm)

Directions

Seam allowances are **1/2" (1.2cm)** unless otherwise stated.
Please watch the **Full Video Tutorial** for thorough demonstration.

Bag Exterior

1. Following the video tutorial and the given diagram, cut and piece the patchwork to create the front and back exterior panel.

Use 1/4" (6mm) seam allowance when sewing the patchwork.

Trim so that each panel will measure 15" x 20" (38 x 51 cm).

2. Apply FF on the wrong side of the front exterior panel; apply FWI on the wrong side of the interior panel (center the position).

3. Apply LWI on the wrong side of the exterior zipper pocket panel (center the position).

Sew and install the zipper pocket on the back exterior panel.

4. Install the ring tabs, female buckle strap, the adjustable straps, and the strap holder to the back exterior panel.

5. Sew and install the female buckle strap to the front exterior panel.

6. Cut 1 1/2" (3.8cm) square notches on both bottom the edges of the exterior panels (do the same for the interior panels).

7. Assemble the bag exterior.

Bag Interior

8. Fuse the FF on the wrong side of the back interior panel (center the position).

9. Fuse the FWI on the wrong side of the front interior panel (upper area, center the position).

10. Sew and install the zipper pocket to the front interior panel.

11. Sew and install the slip pocket to the back interior panel.

12. Sew the zipper panels, then install the zipper closure.

13. Unzip the zipper, then assemble the bag interior the same way as the bag exterior, leave about 4" (10cm) of opening at the bottom.

Assembling, finishing

14. With the bag interior facing right side out, and the bag exterior facing wrong side out, insert the bag interior into the bag exterior; make sure that the front side of the interior is touching the front side of the exterior, and the back side of the interior is touching the back side of the exterior.

15. Turn the bag inside out through the bottom opening, topstitch the top edges.

16. Fold the raw edges of the bottom opening, then sew the edges to close the opening.

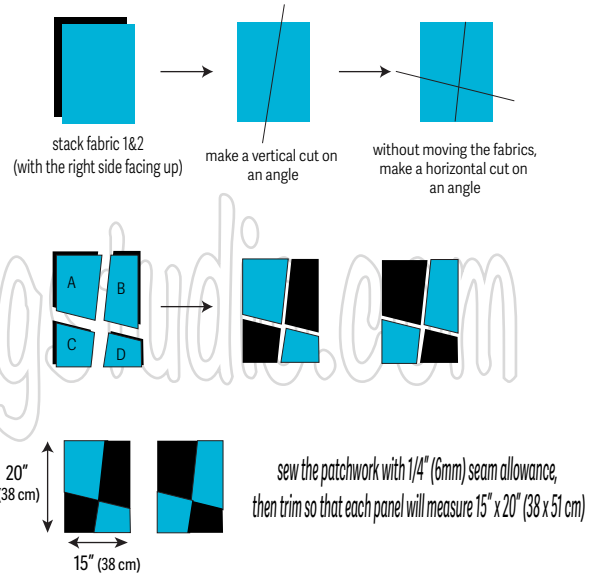
17. Finish your bag by gently pressing it (on low setting, be mindful with the hardwares and the zipper).

Fold the top edges about 5" (12.7 cm), then secure with the buckle

You may sell the bag that you make from this pattern given that it's a home based business.

©Copyright 2022 Yoan Sewing Studio. All Rights Reserved. Duplication of any kind is prohibited.

Making the patchwork for the exterior panels



watch the video tutorial
<https://youtu.be/xf6kuXcphnE>