

Mini Messenger Phone Bag Project -Version 1 (patchwork)

by Yoan Zivkovic - Yoan Sewing Studio

www.yoansewingstudio.com

www.youtube.com/yoansewingstudio

©Copyright 2021 Yoan Sewing Studio



Supplies

Fabric Requirements

Fabric A,B,C (jelly roll fabric) : 3x Jelly roll strips

Fabric D,E (straps, d ring tabs) : 2x Jelly roll strips

Fabric F (lining fabric) : 1/3 yard of cotton quilting fabric

Note : Yardage requirement is estimated, based on 44" wide cotton quilting fabric.

23"x 5 1/2" fusible fleece (thermolam) Pellon TP971F <https://amzn.to/3CszmXa>

1/4 yard (20" wide) fusible woven interfacing - Pellon SF 101 <https://amzn.to/2N9E1td>

1 set of magnetic snap closure <https://amzn.to/3n2LEDm>

All purpose zipper 1" (2.5cm) wide, at least 6" long* <https://amzn.to/3CaYxOb>

(2x) 1/2" (12mm) d-rings <https://amzn.to/3Gf640O>

1/2" (12mm) Adjustable Strap Adjuster <https://amzn.to/2XEfXnv>

(2x) 1/2" (12mm) swivel hooks <https://amzn.to/3juiy1l>

1/4" Basting Tape <https://amzn.to/3xKhpBH>

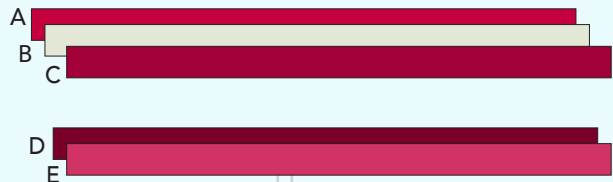
Tools

Basic sewing notions

Walking foot

zipper foot

Polyester thread



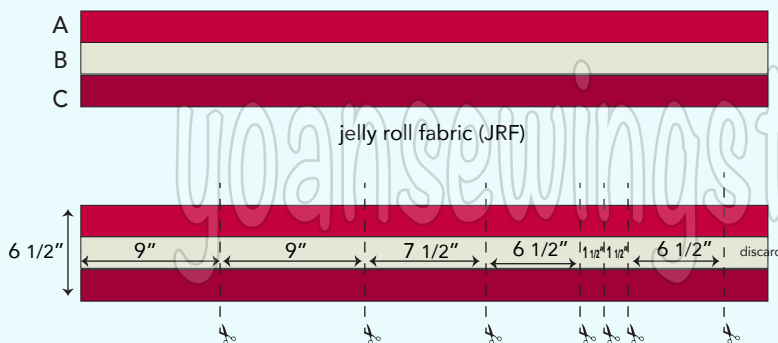
Finished bag measurements :
approx. 5 1/2" x 8 1/2" x 3/4"

Abbreviation
JRF: Jelly roll fabric
FWI : Fusible Woven Interfacing
FF : Fusible Fleece

watch the video tutorial
<https://youtu.be/2H5Ww5k8E8I>

Cutting/ the patchwork

Following the bellow diagrams, sew fabric A,B,C, with 1/4" of seam allowance then cut into individual panels.



Bag Exterior

Panel 1 (front & back exterior)

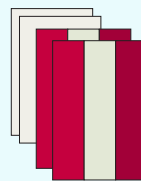
From the JRF, measure 9", cut (make 2x)

From the FF cut (2x) 5 1/2" x 8" rectangles

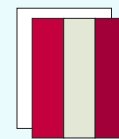
Panel 2 (front exterior pocket)

From the JRF, measure 7 1/2", cut

From the FWI cut 6 1/2" x 7 1/2" rectangle



Panel 1



Panel 2

Panel 3 (inner zipper pocket)

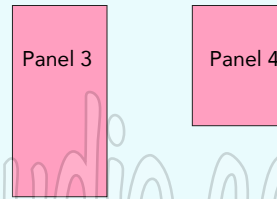
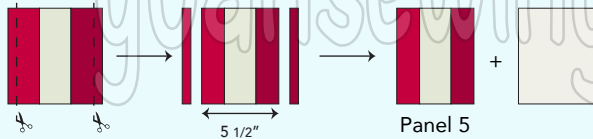
From fabric F cut 6 1/2" x 11" rectangle

Panel 4 (pocket lining)

From fabric F cut 6 1/2" x 7 1/2" rectangle

Panel 5 (Flap external)

From the JRF measure 6 1/2", cut. Then trim 1/2" off both side edges, (refer to the below diagram) to measure 5 1/2".



From the FF cut 5 1/2" x 6 1/2" rectangle

Panel 6 (Flap Lining)

From Fabric F cut 5 1/2" x 6 1/2" rectangle



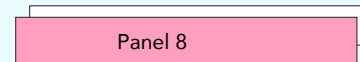
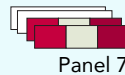
watch the video tutorial
<https://youtu.be/2H5Ww5k8E8I>

Bag Interior

Panel 7 (upper interior)

From the JRF measure 1 1/2", cut (make 2x)

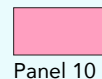
From the FWI cut (2x) 6 1/2" x 1 1/2" strips



Panel 8 (card pocket)

From Fabric F cut 18" x 3" rectangle

From FWI cut 18" x 2 1/2" rectangle



Panel 9 (sides, back)

From fabric F cut (2x) 2 1/4" x 5 1/2" rectangles

Panel 10 (bottom, back)

From fabric F cut 6 1/2" x 3" rectangle



Panel 11 (lower front)

From fabric F cut 6 1/2" x 8"

Panel 12 (slip pocket)

From the JRF measure 6 1/2", cut

From fabric F cut 6 1/2" x 6 1/2" square



Strap/d-ring tabs

d-ring tabs : cut (2x) 2" x 2" squares

adjustable strap : 50" x 2"



Notes :

trim fabric D,E to measure 2" wide, then join them together, to get the required length.

you can also cut from regular fabric instead of using jelly roll strips, simply follow the measurements indicated above.

Preparation

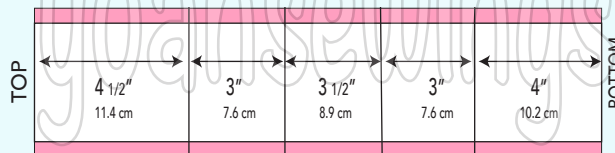
1. Apply FF (according to the manufacturer's instructions) on the wrong side of the following :
 - Panel 1
 - Panel 5
2. Apply FWI (according to the manufacturer's instructions) on the wrong side of the following :
 - Panel 2
 - Panel 7
 - Panel 8

Directions

(Below are brief instructions please refer to the video tutorial for more detailed demonstration)

Seam allowances may vary between 1/8", 1/4", 3/8". please pay close attention to the instructions given in the video.

1. Sew and install the front exterior zipper.
2. Install the female magnetic snap on the right side of panel 2.
3. With panel 2 & 4 right sides together sew the top edges with 1/4" of seam allowance, press, then topstitch.
4. Install the front pocket panel on the right side of the front exterior panel (panel 1).
5. Install the male magnetic snap closure on the right side of the flap lining (panel 6)
6. Sew and install the flap (**use 1/8" of seam allowance**).
7. Assemble the bag exterior (use 3/8" of seam allowance); box the corners (if desired).
8. Following the below diagram, draw the folding lines on the wrong side of panel 8 (card pocket panel).



9. Fold and press panel 8 to create 2x card slots, trim the top edge to measure 5 1/2".
10. Finish the back interior panel by sewing panel 9, 7, and 10.
11. Make the front interior panel by sewing panel 7 and 11 together.
12. Sew and install the slip pocket.
13. Assemble the bag interior (remember to leave an opening at the bottom).
14. Sew and install the d-rings.
15. Sew the adjustable strap then install the hardware.
16. Assemble the bag. Finish with topstitching.

watch the video tutorial
<https://youtu.be/2H5Ww5k8E8I>

You may sell the bag that you make from this pattern given that it's a home based business.