

Zip Around Wallet - Medium

Main Body

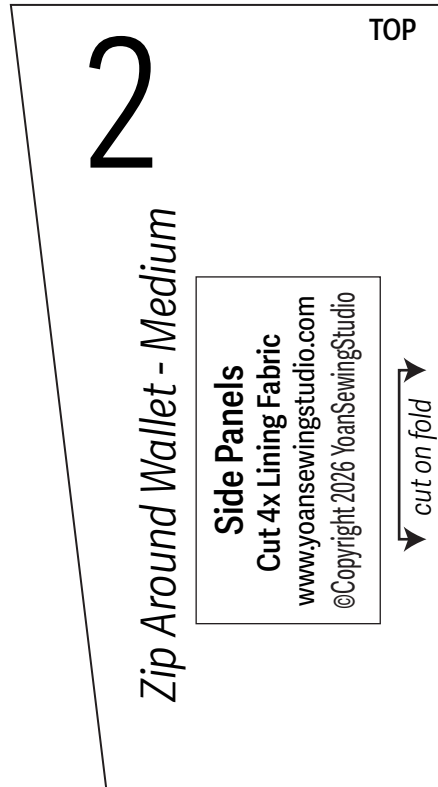
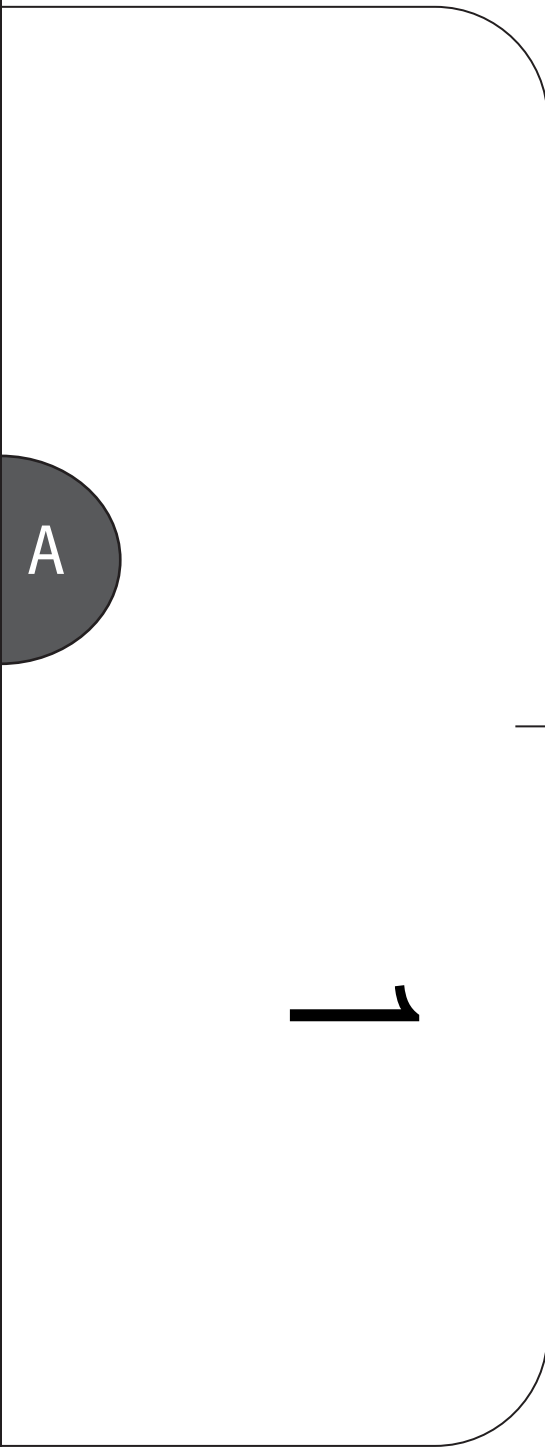
Cut 1x Exterior fabric

Cut 1x Lining fabric

www.yoansewingstudio.com

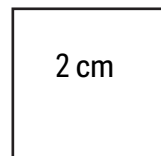
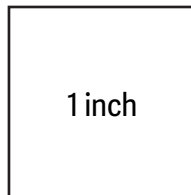
©Copyright 2026 YoanSewingStudio

A



Print at "actual size" or "100%".
Do not scale.
Print orientation : Auto

To ensure accuracy open the pattern
with Adobe Reader.
Free download at www.adobe.com/reader



test squares
(test your printer)

Seam allowances are included in this pattern

©Copyright 2026 YoanSewingStudio | All Rights Reserved

3

Zip Around Wallet - Medium

Stabilizer

Cut 1x Fusible Stabilizer

www.yoansewingstudio.com

©Copyright 2026 YoanSewingStudio

Zip Around Wallet - Medium - Supplies

Fabric

- Exterior : 10" x 8" (25.5 x 20cm) Faux Leather fabric or cork *see note #1*
- Lining : 1/3 yard (0.4m) cotton quilting fabric, 44" (112cm) wide
- RFID blocking fabric (optional) : 10" x 8" (25.5 x 20cm)

Stabilizer & Interfacing *see note #2*

- 20" x 3 1/2" (51 x 9 cm) fusible woven interfacing

Zippers

- 1x Nylon coil zipper 18 1/2" (47cm) long; 1 1/4" (3.2cm) wide /#5 or #4.5
- 1x All purpose zipper 1" (2.5cm) wide, at least 7" (18cm) long

Other

- Polyester thread
- 1/8" or 1/4" basting tape

Tools

- Sewing machine, basic sewing notions, walking foot, zipper foot.
- Pattern weights, sewing machine needle size 90/14 & 100/16, hand sewing needle.

Finished wallet measurements

Approx. 7 1/4" w x 4" h
(18.4 x 10cm)

Designed by :Yoan Zivkovic

Skill Level :Intermediate

Features

Zip-around closure
1x Zipper pocket
6x card slots
2x compartments

Seam allowances are 1/4" (6mm) unless otherwise stated, and are included in the pattern.

NOTES

- 1 Alternative fabric choice : Canvas, cotton quilting, or other light to mid weight woven fabric
- 2 If using alternative fabric, cut one fusible stabilizer (e.g. decovil light, pellon 809, pellon 808); to be applied to the lining fabric.
- 3 After cutting each panel from the pattern pieces, immediately transfer and cut all the notches and marking lines.
- 4 Pay close attention to the pattern pieces labeled with "Top". Mark the "Top" of the fabric after cutting.
- 5 If using cotton quilting fabric for the exterior fabric, apply fusible woven interfacing to add extra body to your fabric.
- 6 If your fabric has directional print, do assessment before cutting to achieve the desired look.
- 7 Always backstitch in the beginning and towards the end of stitching.
- 8 Watch the full instructions in the video tutorial <https://youtu.be/bEjYjGw0iIU>
- 9 Share the pictures of your finished wallet on instagram #yoansewingstudio

Zip Around Wallet - Medium - Cutting Instructions

Following the below chart, cut your fabric, stabilizer, and interfacing accordingly.

Name	Main Fabric	Lining Fabric	Interfacing
Main Body	Cut (1) Pattern 1	Cut (1) Pattern 1	
Card Pockets		Cut (2) 4 1/2" w x 11" h (11.5 x 28 cm)	Cut (2) 10" w x 3 1/2" h (25.5 x 9 cm)
Card Pocket Lining		Cut (2) 4 1/2" w x 3 3/4" h (11.5 x 9.5 cm)	
Zipper Pocket		Cut (4) 6" w x 3 1/4" h (15 x 8 cm)	
Binding (for zipper pocket)		Cut (1) 6" x 1 1/4" (15 x 3.2cm)	
Side Panels		Cut (4) Pattern 2	

Optional RFID blocking fabric : Cut (1) Pattern 1

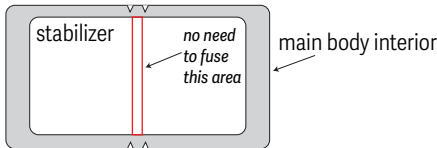
Brief Directions

Seam allowances are 1/4" (6mm) unless otherwise stated.

Please watch the [Full Video Tutorial](#) along side the below instructions for thorough demonstration, and to avoid any confusion.

Preparation

1. If using *cotton quilting fabric* for the exterior, fuse the interfacing to the wrong side of the main body exterior panel.
2. If using *canvas or cotton quilting*, fuse the stabilizer (cut from pattern 3) to the wrong side of the main body interior panel according to the manufacturer's instructions (centered).
Do not fuse around the center point (in between the notches).

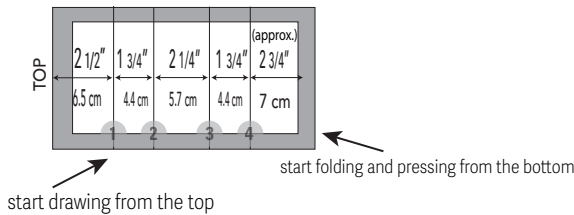


Watch the full video tutorial
<https://youtu.be/QG9TmuvPOZc>

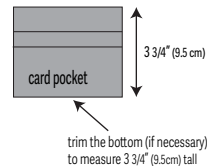
3. If opt for RFID blocking fabric, pin it to the wrong side of the main body interior panel, then baste stitch with 1/8" (3mm) seam allowance.
4. Fuse the interfacing to the wrong side of the card pocket panels (centered)

Wallet Interior

5. Following the below diagram, draw the folding lines for the card slots on the wrong side of each card pocket panel.



6. Fold and press the card pocket panel starting from line 4 (bottom) towards the top to create the card slots.
7. Trim the bottom edges of the card pocket panel so that it will measure 3 3/4" (9.5 cm).
Repeat the same to the remaining card pocket panel.
8. Sew the card pocket lining panels to each card pocket.
9. Install the card pocket panels to each side of the wallet interior.



10. Sew the zipper pocket, bind the bottom edge.
11. Sew the side panels, then attach each panel to each side of the zipper pocket. Set aside.

Attaching the zipper, assembling the wallet

12. With the interior panel right side up, install the zipper closure (right side up).
13. With the right sides facing, sew the wallet interior and wallet exterior. Leave an opening on one of the short side about 4" (10cm).
14. Turn the wallet right side out through the opening, topstitch.
15. Hand sew the bottom edges of the zipper pocket to the center of the wallet interior.
16. Hand sew the side panels to the side edges of the wallet interior, and your wallet is done.

Terms of use : You may sell the wallet that you make with this pattern. Permission to sell is given for small scale home based handmade business.

©Copyright 2026 YuanSewingStudio | All Rights Reserved | Duplication of any kind is prohibited